

JEFF S. HODAPP OF  
**CARNAHAN-PROCTOR AND ASSOCIATES, INC.**  
CONSULTING ENGINEERS  
SURVEYORS ENGINEERS PLANNERS  
6191 WEST ATLANTIC BLVD., MARGATE, FLORIDA 33063

JANUARY 1998 950508J JSH

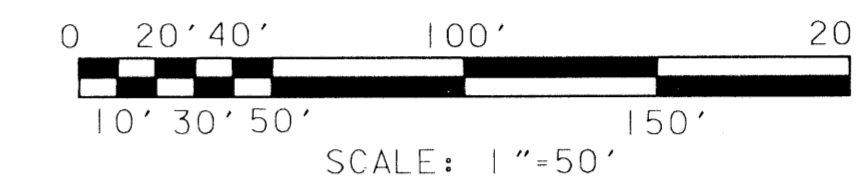
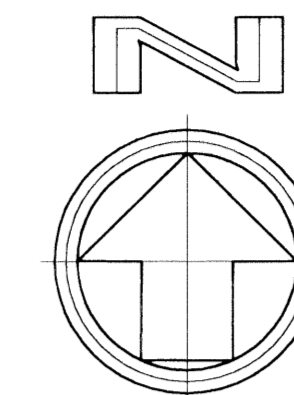
SMITH DAIRY EAST P.U.D.

# LAKEVIEW ESTATES PHASES 3, 4 & 5

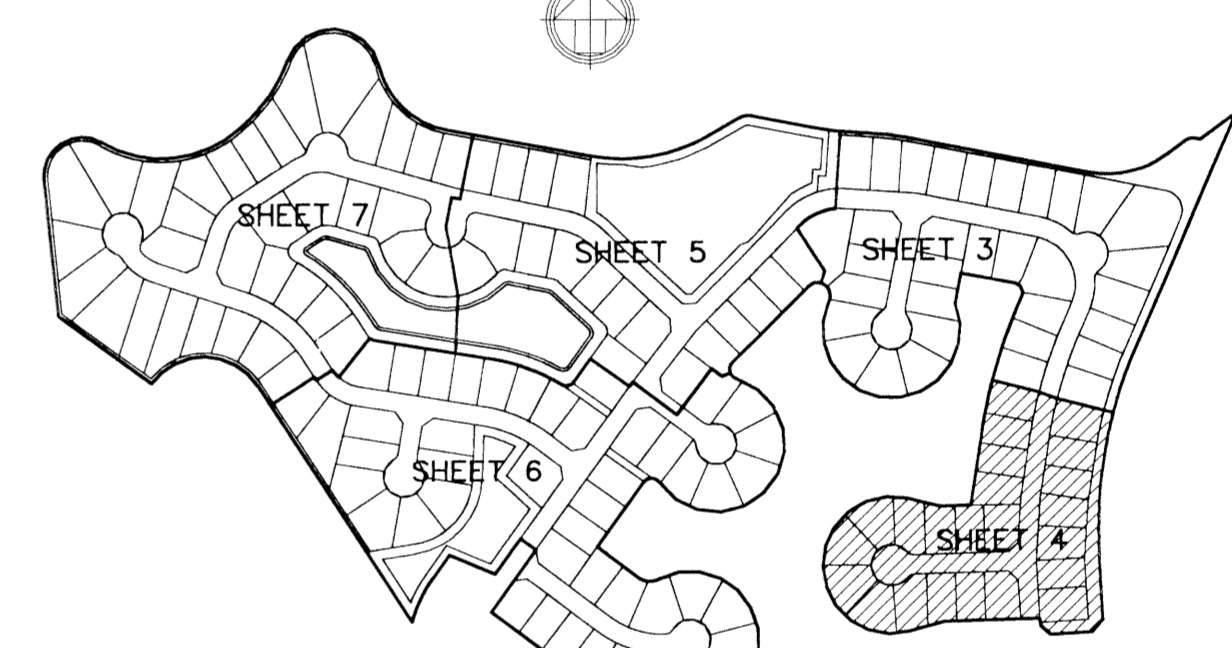
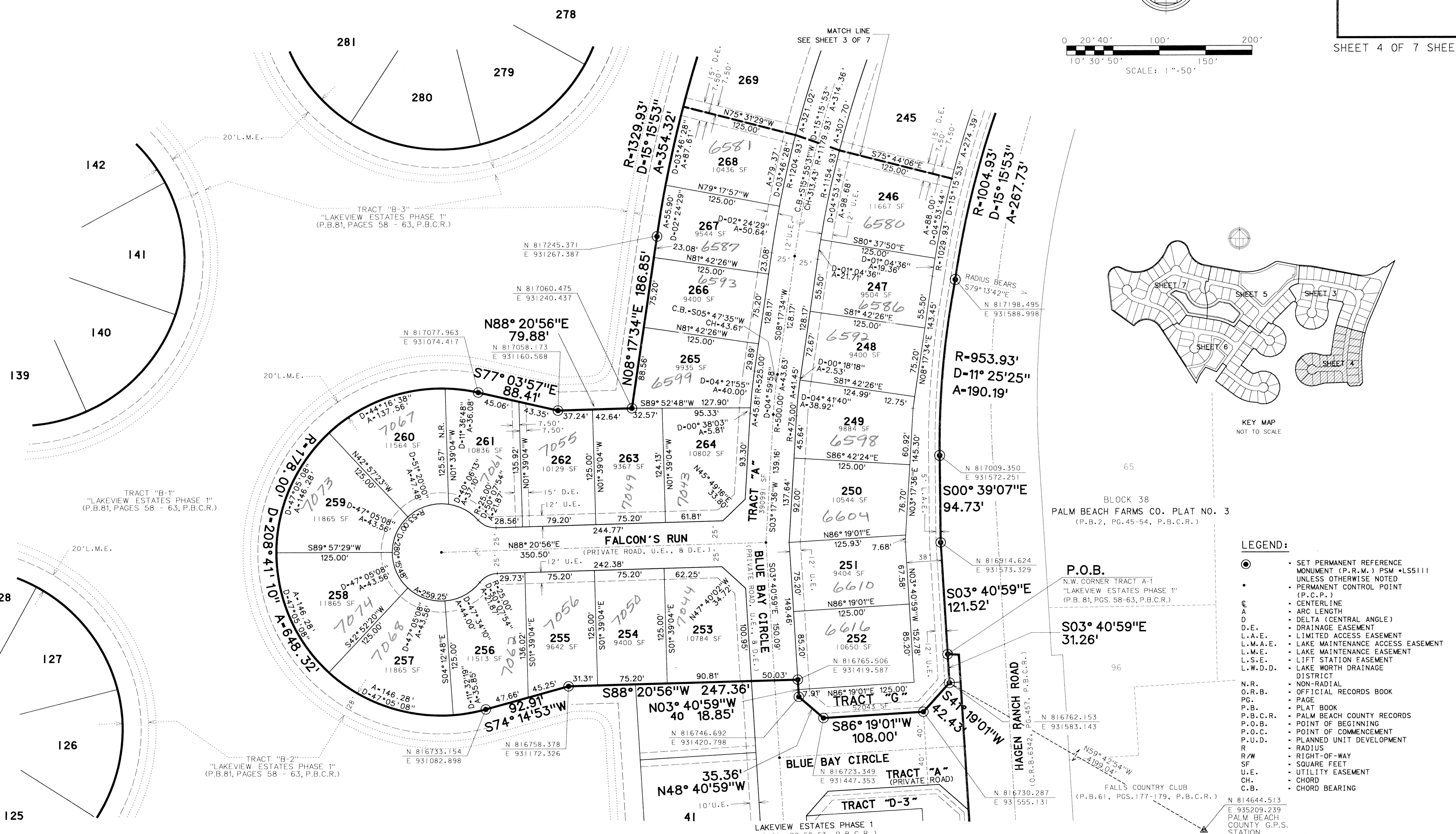
A REPLAT OF A PORTION OF BLOCKS 38 AND 39, "PALM BEACH FARMS CO. PLAT NO. 3"  
(P.B.2, PGS.45-54, P.B.C.R.) AND THE RIGHTS-OF-WAY INCLUDED THEREIN,  
IN SECTION 4, TOWNSHIP 45 SOUTH, RANGE 42 EAST, PALM BEACH COUNTY, FLORIDA

0677-004

# 185



SHEET 4 OF 7 SHEETS



KEY MAP  
NOT TO SCALE

BLOCK 38  
PALM BEACH FARMS CO. PLAT NO. 3  
(P.B.2, PG.45-54, P.B.C.R.)

- LEGEND:**
- SET PERMANENT REFERENCE MONUMENT (P.R.M.) PSM \*LS5111 UNLESS OTHERWISE NOTED
  - PERMANENT CONTROL POINT (P.C.P.)
  - ⊕ CENTERLINE
  - ⊖ ARC LENGTH
  - Δ DELTA (CENTRAL ANGLE)
  - D.E. DRAINAGE EASEMENT
  - L.A.E. LIMITED ACCESS EASEMENT
  - L.M.A.E. LAKE MAINTENANCE ACCESS EASEMENT
  - L.M.E. LAKE MAINTENANCE EASEMENT
  - L.S.E. LIFT STATION EASEMENT
  - L.W.D.D. LAKE WORTH DRAINAGE DISTRICT
  - N.R. NON-RADIAL
  - O.R.B. OFFICIAL RECORDS BOOK
  - PG. PAGE
  - P.B. PLAT BOOK
  - P.B.C.R. PALM BEACH COUNTY RECORDS
  - P.O.B. POINT OF BEGINNING
  - P.O.C. POINT OF COMMENCEMENT
  - P.U.D. PLANNED UNIT DEVELOPMENT
  - R RADIUS
  - R/W RIGHT-OF-WAY
  - SF SQUARE FEET
  - U.E. UTILITY EASEMENT
  - CH. CHORD
  - C.B. CHORD BEARING

LAKEVIEW ESTATES PHASE 1  
(P.B.81, PG.58-63, P.B.C.R.)

N 814644.513  
E 935209.239  
PALM BEACH  
COUNTY G.P.S.  
STATION  
"HYP-JOG"